

DALA-GRIPEN



sitRIGHT

— NUMBER ONE IN THE FOREST —

DALA-GRIPEN GRAPPLES IDEAL FOR USE ON FORWARDERS, TRUCKS AND EXCAVATORS WORLDWIDE.

BEING NR1 IN THE FOREST, WE OFFER A WIDE RANGE OF TOP-QUALITY PRODUCTS TO MAKE YOUR WORK MORE EFFICIENT AND EASY.

DALA-GRIPEN REPRESENTS VARIETY OF GRAPPLES FOR BOTH FORESTRY, CONSTRUCTION AND RECYCLING.

All DALA –GRIPPEN products are supplied with product passport that includes spareparts catalogue as well as technical information about maintenance and usage. You will also find safety instructions and warranty conditions in there.



ENTREPRENADGRIPAR
HEAVY DUTY GRAPPLES



STEN/SORTERINGSGRIPAR
STONE/RECYCLINGS GRABS



MULTIGRIPAR
MULTI GRABS



UNIVERSELLA GRIPAR
UNIVERSAL GRAPPLES



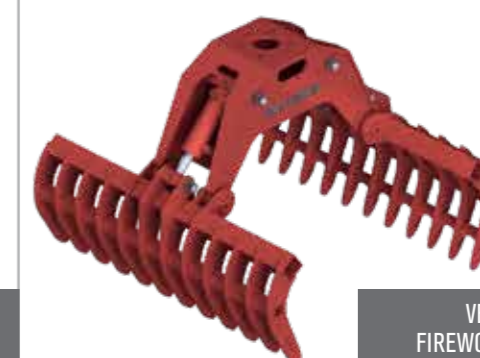
TIMMERGRIPAR
LOG GRAPPLES



RISGRIPAR FOREST
RESIDUE GRAPPLES



SKOPOR
CLAMSHELL BUCKETS



VEDGRIP
FIREWOOD GRAPPLE



ENERGI KLIPP
ENERGY WOOD GRAPPLES



TILLBEHÖR
ACCESSORIES

Note! The manufacturer reserves the right to make changes in technical specifications.

Heavy Duty timber grapple for real challenges, also perfect for tiltrotor use with universal quick hitches. Heavy duty grapple is suited for heavy forest works, different waste sorting and pipe/round wood loading or moving and industrial loadings.

- Construction is strengthened, thicker material with additional mounts, Materials used are well known SSAB quality Strenx 650 Mc, Strenx 700 Mc, with those materials we have achieved higher durability and as light weight as possible of the grapples. Lighter grapple makes excavator or forest machinery to wear out less.
- Grapples has additional fastener points where to attach any, specially adjusted coupling. Adapters should be fastened with screws - you can change and use it on different excavators and forest machinery.
- Except models DGE12 and DGE20, all other models have 2 reaction bars that contribute to stable and symmetrical performance of grapple as well as spread the load on cylinder that in long run decrease the wear of grapple.
- Short cylinder working track provides fast movement of the grapple - opening/closing.

MODEL		DGE12	DGE20	DGE25	DGE28	DGE35	DGE42	DGE55
A	HEIGHT WHEN OPEN	mm 495	550	620	745	770	845	945
B	MAX OPENING	mm 1000	1250	1400	1435	1820	2000	2250
C	HEIGHT WHEN CLOSED	mm 350	425	480	530	610	620	730
D	MIN GRIPPING DIAMETER	mm 57	73	90	105	125	125	125
E	LENGTH WHEN CLOSED	mm 545	645	730	810	930	1045	1150
F	GRIPPING AREA	m ² 0,14	0,2	0,25	0,28	0,35	0,42	0,55
G	WIDTH	mm 264	325	405	420	485	490	600
H	MAX WIDTH	mm 264	335	410	430	495	500	620
EXCAVATOR WEIGHT		ton 0,5-4,0	2,0-6,0	5,0-10,0	8,0-12,0	10,0-16,0	10,0-18,0	16,0-26,0
FORESTRY MACHINE		FT/F/T	FT	FT/F	FT/F	F/T	T	T
GRAPPLE WEIGHT		kg 56	88	145	195	275	290	500
MAX LOAD		kg 1500	2000	3500	3500	5000	5000	5000
MAX WORKING PRESSURE		Bar 200	250	250	250	250	250	250
CYLINDER FORCE		kN 35	78	126	126	160	196	237
GRIPPING FORCE ARMS TIP		kN 7	14	22	22	29	35	43
OPENING TIME 70L/MIN		s 0,2	0,3	0,7	0,5	0,8	1,3	1,5
CLOSING TIME 70L/MIN		s 0,3	0,5	0,8	0,9	1,3	1,8	2
ROTATOR CONNECTION *		B	D	D	C	C	C	H
ORDER CODE		DGE12	DGE20	DGE25	DGE28	DGE35	DGE42	DGE55

FT - forest trailer/ F - forwarder/ T - truck

* Please, see the rotator connection page for detailed information.

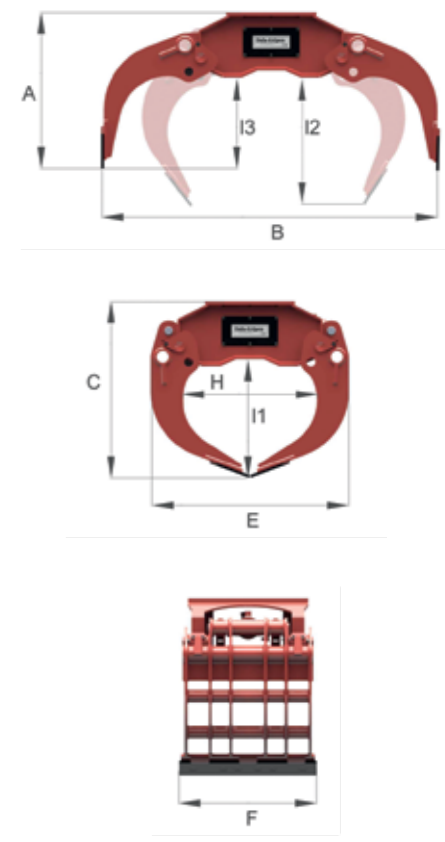
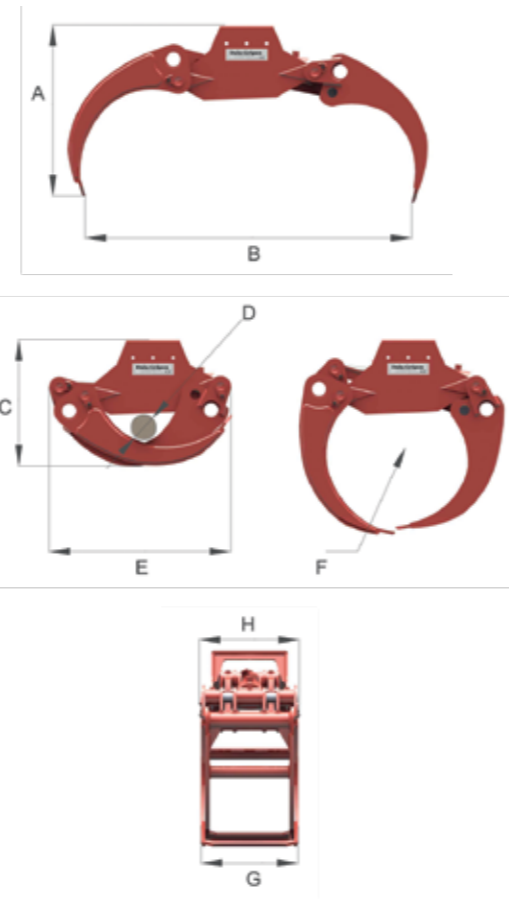
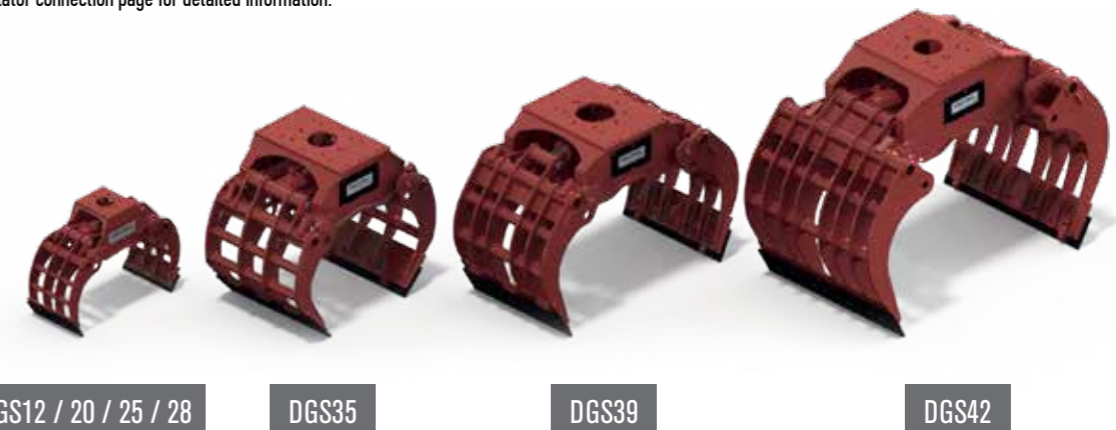


Powerful and durable, at the same time fast and flexible, universal for loading of stone, scrap and other waste. Massive heavy duty claws with enhancement as well as Hardox450 material are insurance of durability.

- Grapples has additional fastener points where to attach any, specially adjusted coupling. Adapters should be fastened with screws - you can change and use it on different excavators and forest machinery. Can be attached with standard forest machinery rotator and work like free hanging grapple.
- 2 reaction links that contribute to symmetrical performance of grapple and spread the load on cylinder that in long run decreases the wear of grapple.
- Short cylinder working track provides fast movement of the grapple - opening/closing.
- Descending knives made of Hardox450, knives are double side useable, if one side is worn out, turn around and you will have new knives.
- DGS39/42 with security valve as standard.

MODEL		DGS12	DGS20	DGS25	DGS28	DGS35	DGS39	DGS42
A	HEIGHT WHEN OPEN	mm 430	470	530	625	730	925	1140
B	MAX OPENING	mm 835	1225	1440	1545	1765	1890	2355
C	HEIGHT WHEN CLOSED	mm 452	610	715	800	910	1040	1280
E	LENGTH WHEN CLOSED	mm 552	640	740	825	945	1125	1400
F	MAX WIDTH	mm 322	395	432	530	780	780	1080
H	GRIPPING AREA WIDTH	mm 375	390	470	530	610	762	955
I1	GRIPPING AREA HEIGHT	mm 237	335	410	460	555	660	825
I2	INSIDE HEIGHT OPENED 1 M	mm -	325	430	500	635	755	950
I3	INSIDE HEIGHT MAX OPENED	mm 221	210	235	300	385	555	700
EXCAVATOR WEIGHT		ton 0,5-4,0	2,0-6,0	5,0-10,0	8,0-14,0	12,0-20,0	14,0-24,0	22,0-35,0
GRAPPLE WEIGHT		kg 62	113	175	275	455	650	1025
MAX LOAD		kg 1500	3000	3500	3500	5000	5000	5000
MAX WORKING PRESSURE		Bar 200	250	250	250	250	250	250
CYLINDER FORCE		kN 35	78	126	126	160	197	238
GRIPPING FORCE ARMS TIP		kN 7	11	18	18	20	25	30
OPENING TIME 70L/MIN		s 0,2	0,3	0,6	0,7	0,8	1	1,6
CLOSING TIME 70L/MIN		s 0,3	0,5	0,9	0,9	1,3	1,6	2,3
ROTATOR CONNECTION *		D	D	D	C	E	E	E
ORDER CODE		DGS12	DGS20	DGS25	DGS28	DGS35	DGS39	DGS42

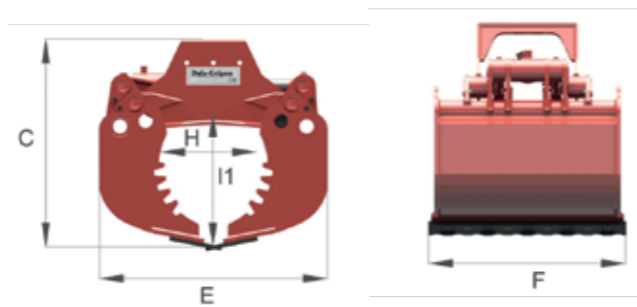
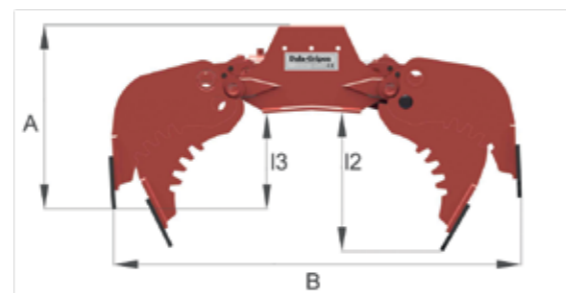
* Please, see the rotator connection page for detailed information.



Multi grapple is suited for different waste sorting and pipe/round wood loading or moving. With multi grapple your work is more flexible without changing machinery - grab, load and even dig if you need so.

- Mainly used as sorting grapple . With specially designed knives (from Hardox 450) where one side is smooth and the other with tags, you can perform max preventing ground damages, turning knives around digging function is available.
- Special designed claws (with tags) catches hold to the material and decreases sliding options.
- With accessories (adjusting sides) grapple becomes as bucket and it is possible to load bulk - excellent for sand, gravel, pebbel etc.
- Grapples has additional fastner points where to attach any, specially adjusted coupling. Adapters should be fastened with screws - you can change and use it on differen excavators and forest machinery. Can be attached with standard forest machinery rotator and work like free hanging grapple.
- 2 reaction bars that contributes to stable and symmetrical performance of grapple as well as spread the load on cylinder that in long run decreases the wear of grapple.
- Short cylinder working track provides fast movement of the grapple - opening/closing.

MODEL		DGM12	DGM20	DGM28	
A	HEIGHT WHEN OPEN	mm	430	470	625
B	MAX OPENING	mm	835	1225	1545
C	HEIGHT WHEN CLOSED	mm	452	610	800
E	LENGTH WHEN CLOSED	mm	552	685	860
F	MAX WIDTH	mm	322	590	740
H	GRIPPING AREA WIDTH	mm	375	360	370
I1	GRIPPING AREA HEIGHT	mm	237	320	455
I2	INSIDE HEIGHT OPENED 1 M	mm	-	325	500
I3	INSIDE HEIGHT MAX OPENED	mm	221	210	300
EXCAVATOR WEIGHT		ton	0,5 - 4,0	2,0-6,0	6,0-14,0
CAPACITY WHEN CLOSED		l	25	120	200
WEIGHT		kg	65	136	308
MAX LOAD		kg	1500	3000	3500
MAX WORKING PRESSURE		Bar	200	250	250
CYLINDER FORCE		kN	35	78	126
GRIPPING FORCE ARMS TIP		kN	7	11	18
OPENING TIME 70L/MIN		s	0,2	0,3	0,7
CLOSING TIME 70L/MIN		s	0,3	0,5	0,9
ROTATOR CONNECTION *			D	D	C
ORDER CODE			DGM12	DGM20	DGM28



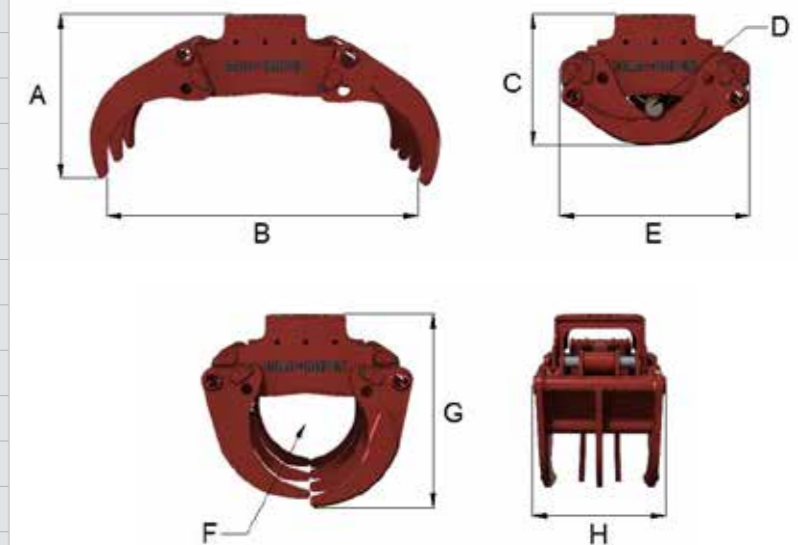
* Please, see the rotator connection page for detailed information.



Heavy duty grapple for rock or debris handling, can also be used for the log handling. Seven arm grapple that gives you more flexibility and helps to manage the toughest jobs you do! Extremely robust due to the high quality material, load holding valves and accumulator for the highest safety level. As all DALA-GRIPEN grapples DGU - universal grapple will be your loyal partner in your everyday challenges!

- High clamping force - jaws grab powerfully and quickly for high productivity. The form of the claws enables a smooth roll in of the stems. The grapples also close to a tight minimum opening, the operator can pick and sort even the smallest items. The by-passing jaws close fully so that also thin objects can be handled with ease. The form of the jaws is such that the grab also penetrates into piles of brush or logging slash. The jaws also have worn resistant Hardox material.
- Every joint in a grapple has a grease fitting and self-lubricating, high hardness 160 Hb bronze bearing. Pins are from high pressure resistant chrome-molibden steel. Grapples have powerful cylinders with heavy pistons. Twin connection rods provide good balance and less stress. A belly plate protects the cylinder from below.
- DGU grapple can be supplied with all most popular brackets for all adapters. The bracket has a 5° angle that levels the grapple and makes it easier to mount on excavator.
- Available with 5 or 7 claws.

MODEL		DGU20-5	DGU20-7	
A	HEIGHT WHEN OPEN	mm	600	600
B	MAX OPENING	mm	1060	1060
C	HEIGHT WHEN CLOSED	mm	460	460
D	MIN GRIPING DIAMETER	mm	88	88
E	LENGTH WHEN CLOSED	mm	675	675
F	GRIPPING AREA	m ²	0,2	0,2
G	HEIGHT, TIP AGAINST TIP	mm	670	670
H	WIDTH	mm	480	480
EXCAVATOR WEIGHT		ton	5,0-12,0	5,0-12,0
FINGER AMOUNT		pcs	5	7
WEIGHT		kg	162	175
MAX LOAD		kg	3000	3000
MAX WORKING PRESSURE		Bar	250	250
CYLINDER FORCE		kN	78	78
GRIPPING FORCE ARMS TIP		kN	10	10
OPENING TIME 70L/MIN		s	0,4	0,4
CLOSING TIME 70L/MIN		s	0,6	0,6
ROTATOR CONNECTION *			D	D
ORDER CODE			DGU20-5	DGU20-7



* Please, see the rotator connection page for detailed information.



DGU20 - 5



DGU20 - 7

Round wood grapples that are fast and reliable. Everything that you need for smooth loading of timber on and off machines, with a high level of productivity. Rolling - in characteristics and opening speed ensures top quality handling.

Grapples designed to take care of bushes, little sediment, twigs and branches. The claws are strong and flexible to make your performance fast and easy.

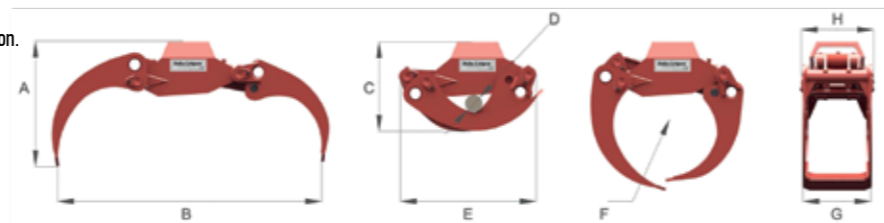
- Standard grapple construction. Materials used are well known SSAB quality Weldox 700, Strenx 650 Mc, Strenx 700 Mc, with those materials we have achieved higher durability and as light weight as possible of the grapples. Lighter grapple makes excavator or forest machinery to wear out less.
- All connections are accordingly to all manufacturers standard rotator mount locations.
- Except models DG8, DG14, DG20 and DG22, all other models have 2 reaction bars that contributes to stable and symmetrical performance of grapple as well as spread the load on cylinder that in long run decreases the wear of grapple.
- Short cylinder working track provides fast movement of the grapple - opening/closing.

- Standard grapple construction. Materials used are well known SSAB quality Weldox 700, Strenx 650 Mc, Strenx 700 Mc, with those materials we have achieved higher durability and as light weight as possible of the grapples. Lighter grapple makes excavator or forest machinery to wear out less.
- All connections are accordingly to all manufacturers standard rotator mount locations.
- Except models DGR14, DGR20 and DGR22, all other models have 2 reaction bars that contributes to stable and symmetrical performance of grapple as well as spread the load on cylinder that in long run decreases the wear of grapple.
- Short cylinder working track provides fast movement of the grapple - opening/closing.

MODEL			DG8	DG14	DG20-2	DG22	DG25	DG28	DG29	DG35	DG36	DG42	DG55
A	HEIGHT WHEN OPEN	mm	405	495	550	520	615	735	695	760	735	845	945
B	MAX OPENING	mm	865	1000	1250	1300	1400	1435	1560	1820	1730	2000	2250
C	HEIGHT WHEN CLOSED	mm	325	350	415	420	475	520	550	600	570	620	730
D	MIN GRIPING DIAMETER	mm	60	57	73	70	90	105	110	125	120	125	125
E	LENGTH WHEN CLOSED	mm	450	545	645	660	730	810	830	930	890	1045	1150
F	GRIPPING AREA	m ²	0,08	0,14	0,2	0,22	0,25	0,28	0,29	0,35	0,36	0,42	0,55
G	WIDTH	mm	220	260	280	364	375	420	420	485	472	490	600
H	MAX WIDTH	mm	220	260	295	364	390	430	488	495	540	500	620
FORESTRY MACHINE		FT/F/T	FT	FT	FT	FT	FT/F	FT/F	F	F/T	F/T	T	T
GRAPPLE WEIGHT		kg	25	45	68	88	125	170	240	250	280	290	500
MAX LOAD		kg	350	1200	2000	2500	3500	3500	3500	5000	5000	5000	5000
MAX WORKING PRESSURE		Bar	180	200	250	250	250	250	250	250	250	250	250
CYLINDER FORCE		kN	35	35	78	72	126	126	126	160	160	196	237
GRIPPING FORCE ARMS TIP		kN	7	7	14	9	22	22	18	29	19	35	43
OPENING TIME 70L/MIN		s	0,2	0,2	0,3	0,4	0,7	0,5	0,9	0,8	1	1,3	1,5
CLOSING TIME 70L/MIN		s	0,3	0,3	0,5	0,6	0,8	0,9	1,5	1,3	1,6	1,8	2
ROTATOR CONNECTION *			F	A	A	B	D	D	C	C	C	C	H
ORDER CODE			DG8	DG14	DG20-2	DG22	DG25	DG28	DG29	DG35	DG36	DG42	DG55

FT - forest trailer/ F - forwarder/ T - truck

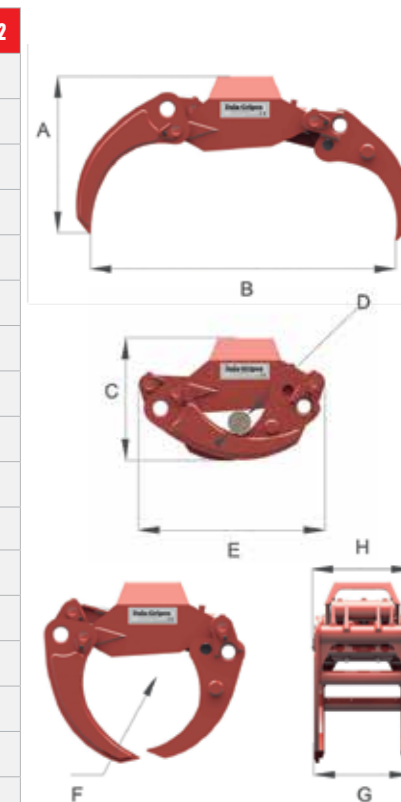
* Please, see the rotator connection page for detailed information.



MODEL			DGR14	DGR20	DGR22	DGR25	DGR28	DGR29	DGR35	DGR36	DGR42
A	HEIGHT WHEN OPEN	mm	495	415	520	500	570	695	610	735	680
B	MAX OPENING	mm	1000	1255	1300	1400	1475	1560	1810	1730	2000
C	HEIGHT WHEN CLOSED	mm	350	415	420	475	520	550	600	570	610
D	MIN GRIPING DIAMETER	mm	65	73	70	90	105	110	125	120	125
E	LENGTH WHEN CLOSED	mm	545	645	660	730	810	830	930	890	1045
F	GRIPPING AREA	m ²	0,14	0,2	0,22	0,25	0,28	0,29	0,35	0,36	0,42
G	WIDTH	mm	260	280	364	375	420	434	485	472	490
H	MAX WIDTH	mm	260	295	364	390	430	488	495	540	500
FORESTRY MACHINE		FT/F/T	FT	FT	FT	FT/F	FT/F/T	F/T	F/T	F/T	F/T
GRAPPLE WEIGHT		kg	45	68	88	120	170	240	245	278	285
MAX LOAD		kg	1200	2000	2500	3500	3500	3500	5000	5000	5000
MAX WORKING PRESSURE		Bar	200	250	250	250	250	250	250	250	250
CYLINDER FORCE		kN	35	78	72	126	126	126	160	160	196
GRIPPING FORCE ARMS TIP		kN	7	14	9	22	22	18	29	19	35
OPENING TIME 70L/MIN		s	0,2	0,3	0,4	0,7	0,5	0,9	0,8	1	1,3
CLOSING TIME 70L/MIN		s	0,3	0,5	0,6	0,8	0,9	1,5	1,3	1,6	1,8
ROTATOR CONNECTION *			A	A	B	D	D	C	C	C	C
ORDER CODE			DGR14	DGR20	DGR22	DGR25	DGR28	DGR29	DGR35	DGR36	DGR42

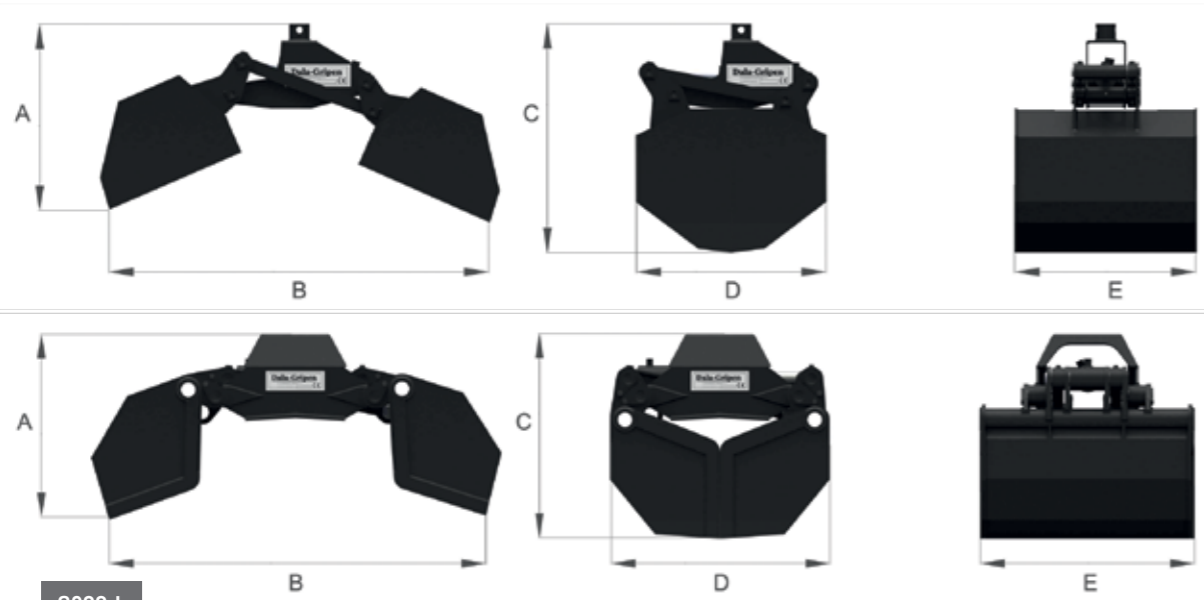
FT - forest trailer/ F - forwarder/ T - truck

* Please, see the rotator connection page for detailed information.



Clamshell buckets are made on the basis of our successful and proven to be durable design of standard grapple.
Available in 3 most popular sizes, with optimal geometry and perfect construction.
Clamshell buckets can be used on all machinery using the bracket.

G60L / 100 L



G200 L

MODEL		G60L	G100L	G200L
A	HEIGHT WHEN OPEN	mm 480	485	625
B	MAX OPENING	mm 1210	1335	1535
C	HEIGHT WHEN CLOSED	mm 650	715	760
D	LENGTH WHEN CLOSED	mm 500	580	820
E	MAX WIDTH	mm 406	550	790
CAPACITY		l 60	100	200
GRAPPLE WEIGHT		kg 59	78	270
MAX LOAD		kg 500	600	2500
MAX WORKING PRESSURE		Bar 160	160	250
CYLINDER FORCE		kN 50	50	126
GRIPPING FORCE ARMS TIP		kN 8	8	18
OPENING TIME 70L/MIN		s 0,3	0,3	0,7
CLOSING TIME 70L/MIN		s 0,5	0,5	1,1
ROTATOR CONNECTION *		F/G	F/G	C
ORDER CODE		G60L	G100L	G200L

* Please, see the rotator connection page for detailed information.



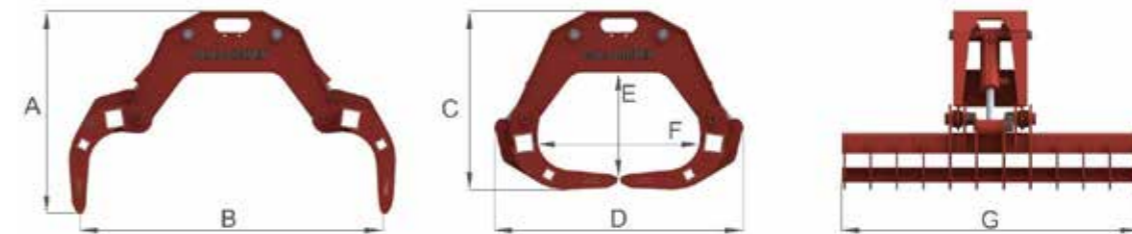
G60 L / 100 L



G200 L

WG400 is the pioneer in its kind on the market. The grapple is developed to improve the handling of fire wood.
The grapple manages easily to load, unload and move all kinds of wood.
The grapple is simple and light, but gives a clear and versatile result.

- Materials used are well known DOMEX quality, with this material we have achieved higher durability and as light weight as possible of the grapple.
- All connections are accordingly to all manufacturers standard rotator mount locations
- Grapple has 2 cylinders. Thanks to the pressure relief valve, both cylinders work identically.



MODEL		WG400	
A	HEIGHT WHEN OPEN	mm	710
B	MAX OPENING	mm	1230
C	HEIGHT WHEN CLOSED	mm	680
D	LENGTH	mm	1100
E	INSIDE HEIGHT	m ²	410
F	INSIDE WIDTH	mm	620
G	WIDTH	mm	930
WEIGHT		kg	175
MAX WORKING PRESSURE		Bar	210
CYLINDER FORCE		kN	65
GRIPPING FORCE ARMS TIP		kN	14
ROTATOR CONNECTION*		D	
ORDER CODE		WG400	

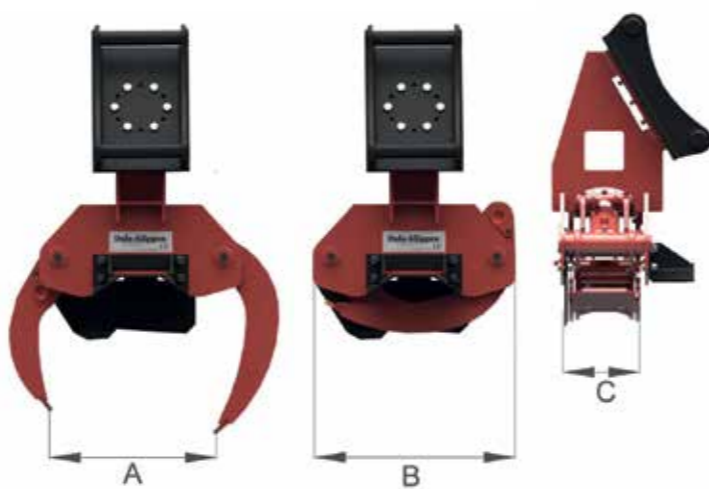
* Please, see the rotator connection page for detailed information.



With DALA-KLIPPEN energy wood gathering is more productive and profitable! Top quality product that allows you to be faster as movement track of the Energy wood grapple has been made precise. Excellent for cutting round wood up to 300mm as well as cutting bushes.

- Standard grapple construction. Materials used are well known SSAB quality Weldox 700, Strenx 650 Mc, HARDOX 450, with those materials we have achieved higher durability and as light weight as possible of the grapples. Lighter grapple makes excavator or forest machine to wear out less.
- Grapples has additional fastener points where to attach any, specially adjusted coupling. Adapters should be fastened with screws - you can change and use it on different excavators.
- Strong powerful cylinder that ensures safe cut of materials.
- Passive knife (screwed to the grapple) ensures fast work of excavator as there is no need of additional function during the cutting of wood.
- Passive Knife doesn't need any additional hydraulic connections from excavator.
- DGC250/ 300 with speed valve.

MODEL		DGC180	DGC180-K	DGC250	DGC300
A	MAX OPENING	mm 700	700	680	840
B	GRAPPLE LENGHT WHEN CLOSED	mm 670	670	800	950
C	GRAPPLE WIDTH	mm 290	290	410	540
	EXCAVATOR WEIGHT	ton 2,5-8,0	-	5,0-12,0	12,0-24,0
	FORESTRY MACHINE	FT/F/T -	FT	-	-
	WEIGHT	kg 185	210	270	570
	WORKING PRESSURE	Bar 180-250	180-250	210-280	210-280
	MIN OIL FLOW	l/min 25	25	60	90
	SINGLE CUT	Ømm 180	180	250	300
	ROTATOR CONNECTION *	Brackets	D	Brackets	Brackets
	ORDER CODE	DGC180	DGC180-K	DGC250	DGC300

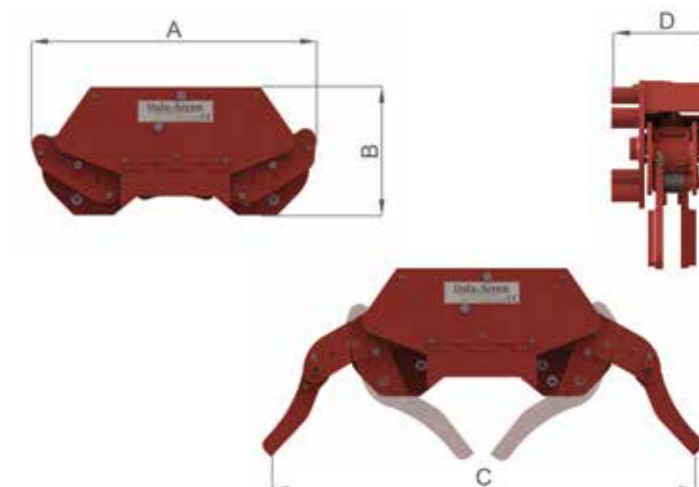


* Please, see the rotator connection page for detailed information.



- Increases harvesting capacity by 50-75% and thus giving a lower cost.
- Possible to mount to Dala-Klippen.
- Dala-Acc should mounts on the clipper that is used with rotortilt.
- It is powered by a four-hose rotor or alternate valve. There must be a leak-free oil line with a free return and, if you have 3 hoses, power cable for the gear valve.
- Can be used on DGC250 and DGC300.

MODEL		ACC
A	WIDTH WHEN CLOSED	mm 755
B	DEPTH WHEN CLOSED	mm 340
C	MAX OPENING	mm 1120
D	HEIGHT	mm 275
	WEIGHT	kg 98
	MATERIAL HOLDING AREA	m2 0,07
	WORKING PRESSURE	Bar 80-120
	OIL FLOW	l/min 20-60
	OPENING TIME 20L/MIN	s 0,5
	CLOSING TIME 20L/MIN	s 0,3
	ORDER CODE	ACC



DGC180



DGC180-K



DGC250

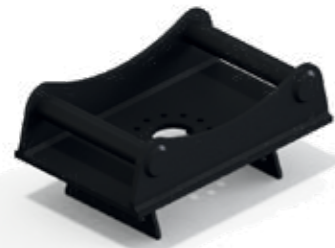


DGC300



DALA-SWEEPER has a wide range of applications and can be used both on forklift trucks and excavators.
With DALA-SWEEPER you can clear grain, gravel, debris, water, even snow and much more.

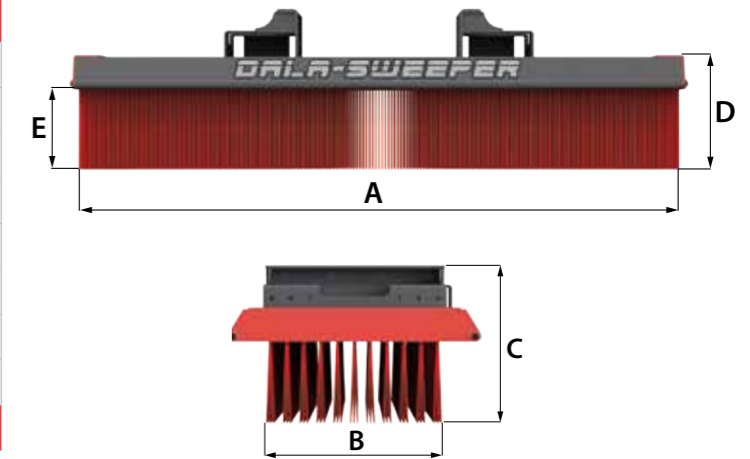
- The sweeper will be used daily and in tough environment what have been taken into consideration in desing and choice of materials of the product. The tunnels for the brush is specially made, bended inhouse for the best precision so that the sweeper is stable and longlasting.
- Forklift brackets come as standard for all 3 size sweepers: 1,5; 1,8 and 2,4 meters in width.
- Remarkable sweeping quality is secured by 11 rows of brushes. Those can be easily changed and repalced in less than 10 min.
- For excavators all type of brackets can be ordered as well as with rotation. Unique option to order sweeper with combi bracket, for example S40/45 etc.



TILLBEHÖR ACCESSORIES



MODEL		DS1500	DS1800	DS2400
A	WIDTH	mm 1500	1800	2400
B	LENGHT	mm 620	620	620
C	MAX HEIGHT	mm 410	410	410
D	HEIGHT	mm 280	280	280
E	EFFECTIVE BRUSH HEIGHT	mm 205	205	205
WEIGHT		kg 118	135	173
BRUSH STRIPE DIMENSIONS		mm(L*H) 1495*280	1795*280	1195*280
QUANTITY OF BRUSH STRIPES		pcs 11	11	22
ORDER CODE		DS1500	DS1800	DS2400



SURFACE MILLING CUTTER MOUNTED ON THE EXCAVATOR

The perfect tool for you to put on your excavator. Use for the removal of coatings and leveling of concrete and similar surfaces.

- Hydraulic rotary cutter plate with interchangeable rotary cutter wheels of cemented metal carbide.
- The design provides a smooth milling against the worksurface.
- Adjustable speed and rotational direction.
- The attachment to the machine can be turned and moved into different positions.
- Supplied with Quick-Release mod. S40, S45, S50 or S60. Other fasteners can be ordered.
- Swedish design with manufacturing and spareparts in warehouses in Sweden.
- CE Marked.

Occupational health and ergonomics

- Safe and relieved working environment
- Reduced noise and harmful dust compared to manual grinding and blasting
- Reduces occupational injuries and repetitive stress injuries

Economy

- Fast removal of tar
- Faster installation and completion
- Shortened construction time
- Sturdy and strong construction with
- Durable carbide cutting wheels

Higher quality

- More tar removed from the wall
- Improves moisture migration through the wall
- Smooth surface to surface to put the insulation on
- Meets applicable requirements from insulation suppliers



MODEL	YTF-420
SIZE	425mm diameter
WEIGHT	Appr 70kg
CONNECTION	2 hoses with quick coupling type THEME 2510
FINISHING	Fully galvanized with anti-corrosion treatment
SYPLY PRESSURE	In continuous operation 175bar, Intermittent 200bar peak maximum 225 bar.
MAX OIL FLOW	Continuous 60 l/min. Intermittent 75 l/min.
MAXIMUM SPEED	60 r / min.
ORDER CODE	YTF-420

* Note! The manufacturer reserves the right to make changes in technical specifications.



Quick connector is quick coupler to mount between rotator and different grapples or other tools.

Thank's to quick connector you can change grapple/tool just in a few minutes!

Only 2 screws to tighten and 2 quick couplings to push in with ONE special wrench!

SAVE TIME - WORK WITH QUICK CONNECTOR!



LIFTING CAPACITY 10T
WEIGHT 24 KG

MODEL	QC	
A MAX WIDTH	mm	210
B MAX LENGHT	mm	380
C HEIGHT	mm	100
D ROTATOR CONNECTION*	mm	C
E GRAPPLE CONNECTION*	mm	C
FORESTRY MACHINE	FT/F/T	FT/F/T
WEIGHT	kg	24
MAX LOAD	kg	10000
ORDER CODE	QC	



FT - forest trailer/ F - forwarder/ T - truck

* Please, see the rotator connection page for detailed information.

BioTassu is a grapple tilt to large and small machines. With BioTassu grapple can be tilted up which reduces the need for space between the trees. BioTassu works with the base machine's hydraulics.

The forwarder's performance is increased and saves time and money.

- BioTassu is an equipment which is simple to assemble.
- With the new radio control requires no additional hydraulic, only grapple open and grapple close.
- You select the function with the optional keypad mounted on the left joystick.
- Two batteries and charger included.
- BioTassu reduce impact shock to the machine and operator.
- The bundle is simply out of the trees.
- BioTassu minimizes damage to remaining trees.

Benefits

- BioTassu simplifies and makes the work more quickly when thinning
- Reduces the impact shock to the machine and driver
- The forwarder's performance is increased
- Saves time
- Greater profitability
- Minor damage to the remaining trees

Application areas

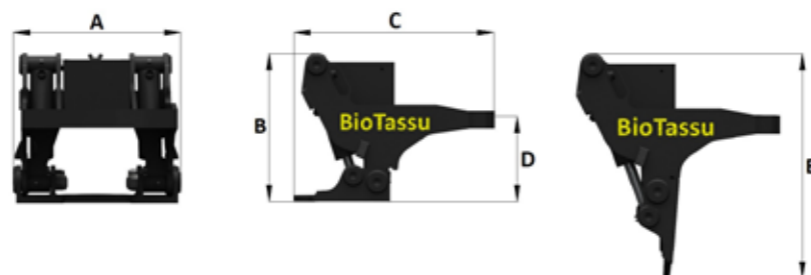
- Forestry
- On timber cranes
- Clearing of electricity lines

MODEL S35

- CE-marked
- Weight about 60kg
- MAX load 3500kg
- All grapples 0 -0,28m³
- Suitable for light and medium heavy forestry machinery.
- Suitable for all forwarder's.
- Can be mounted on all most commonly used grapples.

MODEL		BS35	
A	WIDTH	mm	418
B	HEIGHT WHEN CLOSED	mm	380
C	LENGHT	mm	495
D	HEIGHT ROTATOR-GRAPPLE	mm	215
E	MAX HEIGHT	mm	545
WEIGHT		kg	62
MAX LOAD		kg	3500
MAX WORKING PRESSURE		Bar	210
OIL FLOW		l/min	20-60
MOVING TIME UP 20L/MIN		s	2
MOVING TIME DOWN 20L/MIN		s	1
CONNECTION ROTATOR-BIOTASSU		C	
CONNECTION BIOTASSU-GRAPPLE		C	
ORDER CODE		BS35	

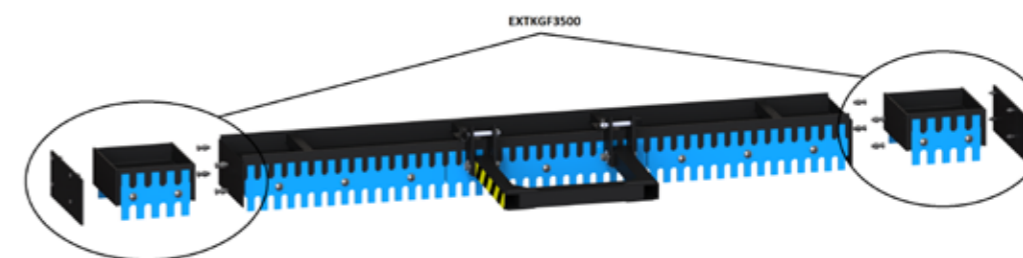
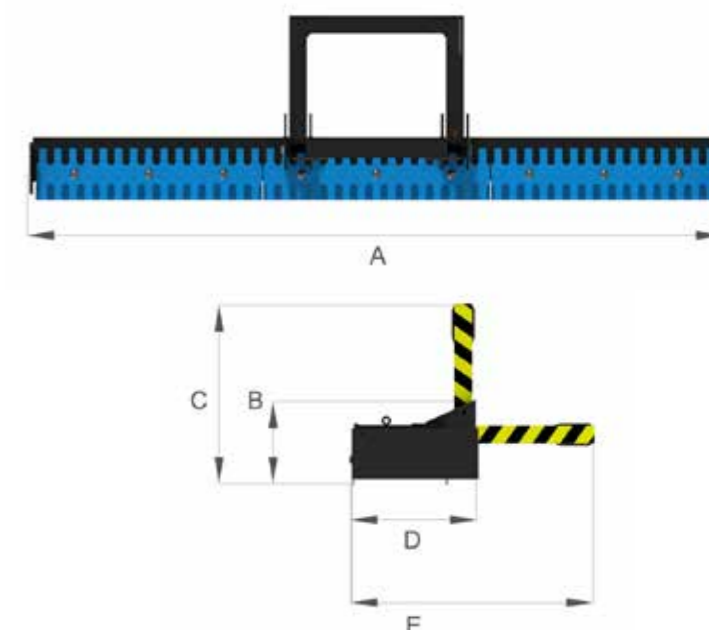
* Note! The manufacturer reserves the right to make changes in technical specifications.



Dala-Grader is built and tested for usage on cranes of forwarders. Serrated in the front and light notch at the back. With DalaGrader, you quickly restore the road. The serrated notch pulls up the road materials and the slight notch smoothens the road, also effectively removes branches from the road. Perfect to pull off the clay of the road. Can also be used to pull apart gravel that has not spread properly. Heavy construction insures stable usage on the surface. Locking racks for transport mode, 2 positions for pulling the bracket.

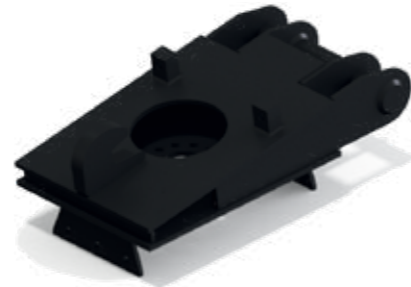
MODEL		GF3000	GF3000 EXTENSION KIT TO GF3500	
A	WIDTH	mm	3000	3000 + 500
B	HEIGHT	mm	335	335
C	MAX HEIGHT	mm	970	970
D	LENGTH	mm	500	500
E	MAX LENGTH	mm	1260	1260
WEIGHT		kg	320	320 + 60
ORDER CODE		GF2700	EXTKGF3500	

* Note! The manufacturer reserves the right to make changes in technical specifications.





S60



B20

GRAPPLES/ADAPTER BRACKETS					
MS01	MS03	MS08	MS10	MS21	MS25
DGE12	DGE12	DGE20	DGE28	DGE42	DGE55
DGE20	DGE20	DGE25	DGE35	DGE55	DGS42
DGS12	DGE25	DGE28	DGE42	DGS35	
DGM12	DGS12	DGE35	DGE55	DGS39	
	DGS20	DGE42	DGS28	DGS42	
	DGS25	DGS20	DGS35	DGC300	
	DGM12	DGS25	DGS39		
	DGM20	DGS28	DGM28		
	DGU20-5	DGM20	DGC250		
	DGU20-7	DGM28	DGC300		
	DGC180	DGU20-5			
	DGC250	DGU20-7			
	DGC180				
	DGC250				
	DGC300				

GRAPPLES/ADAPTER BRACKETS						
CW-00	CW-05	CW-10	CW-20	CW-30	CW-40	CW-45
DGE12	DGE12	DGE20	DGE25	DGE35	DGE55	DGE55
DGS12	DGE20	DGE25	DGE28	DGE42	DGS35	DGS42
DGM12	DGS12	DGS20	DGE42	DGE55	DGS42	
	DGS20	DGS25	DGS25	DGS35	DGC300	
	DGM12	DGS28	DGS28	DGS39		
	DGM20	DGM20	DGS35	DGS42		
	DGC180	DGM28	DGS39	DGC300		
		DGU20-5	DGM28			
		DGU20-7	DGU20-5			
		DGC180	DGU20-7			
		DGC250	DGC250			
			DGC300			

GRAPPLES/ADAPTER BRACKETS									
S30/150	S30/180	S40	S45	S50	S60	B20 (S1)	S70	B27 (S2)	S80
DGE12	DGE12	DGE12	DGE20	DGE20	DGE28	DGE42	DGE42	DGE55	DGS42
DGE20	DGE20	DGE20	DGE25	DGE25	DGE35	DGE55	DGE55	DGS39	
DGS12	DGS12	DGE25	DGE28	DGE28	DGE42	DGS35	DGS35	DGS42	
DGM12	DGM12	DGS12	DGE35	DGE35	DGE55	DGS39	DGS39	DGC300	
		DGS20	DGE42	DGE42	DGS28	DGS42	DGS42		
		DGS25	DGS20	DGS20	DGS35	DGC300	DGC300		
		DGM12	DGS25	DGS25	DGS39				
		DGM20	DGS28	DGS28	DGM28				
		DGU20-5	DGM20	DGM20	DGS300				
		DGU20-7	DGM28	DGM28					
		DGC180	DGU20-5	DGU20-5					
		DGC250	DGU20-7	DGU20-7					
		DGC180	DGC180						
		DGC250	DGC250						
		DGC300	DGC300						



MS03 / DGE 25



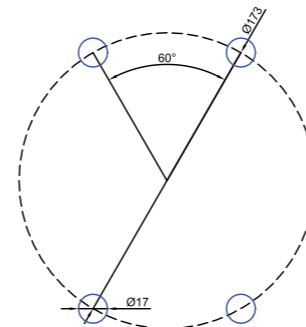
MS03 / DGS 20



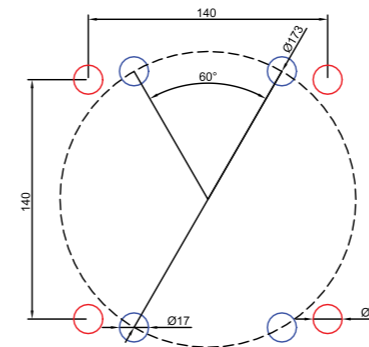
S45 / DGS 20



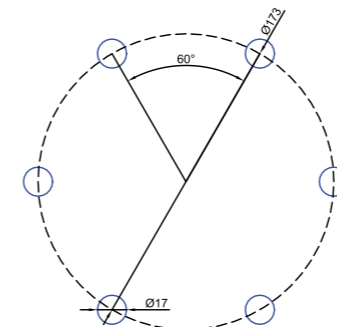
S45 / DGE 25



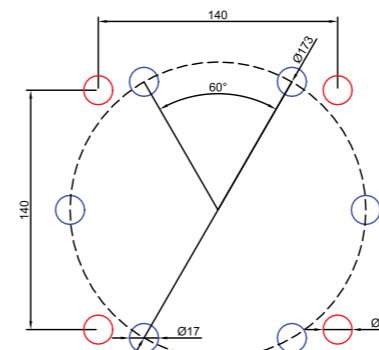
A



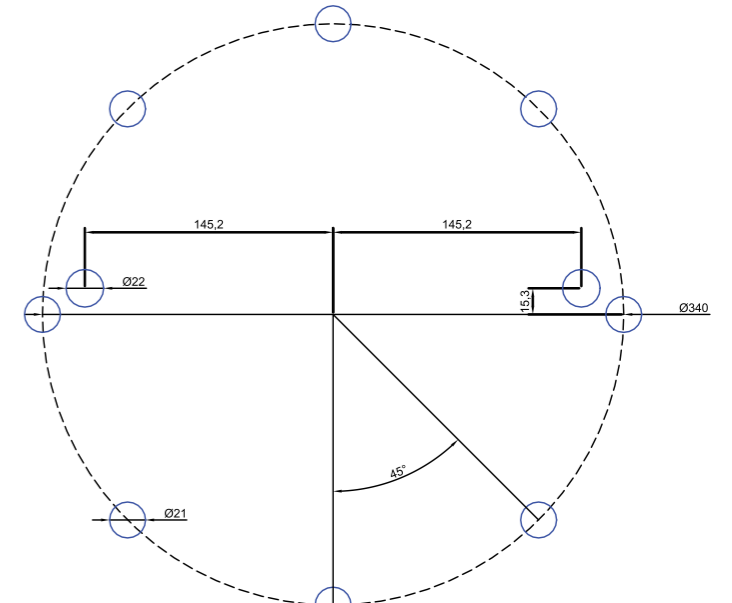
B



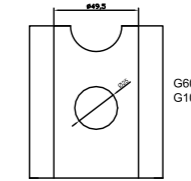
C



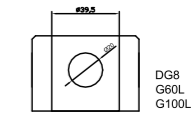
D



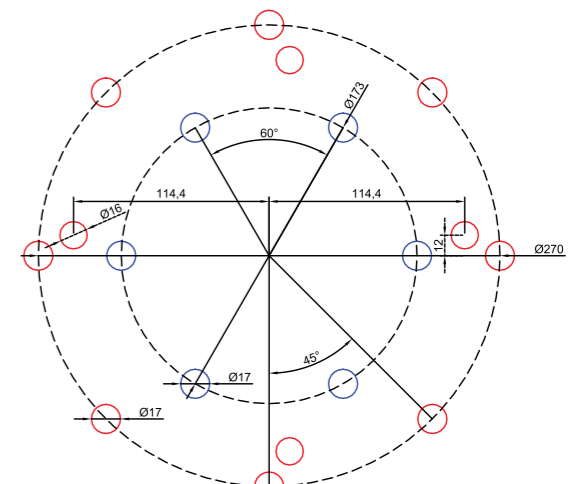
E



F



G



H

***SIT*RIGHT**

— NUMBER ONE IN THE FOREST —

Närsjövägen 36,
SE-78693 NÅS, Sweden
E-mail: mail@sit-right.se
Phone: +46 2813 0030
www.sit-right.se