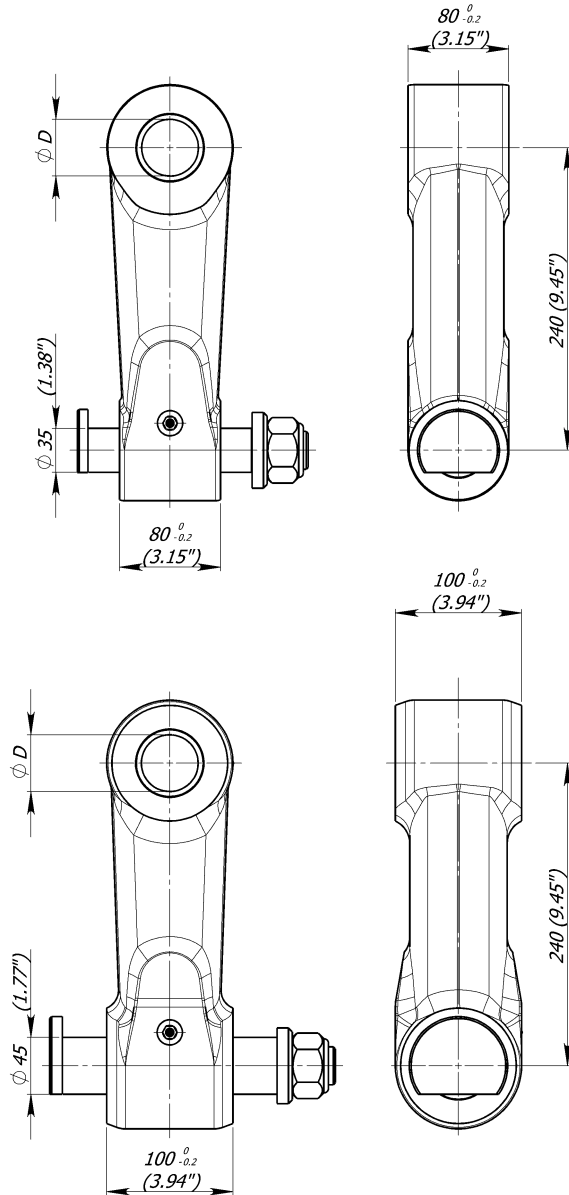


Linkset 80 steel, Linkset S steel

Gelenk 80 Stahl, Gelenk S Stahl



Part no
 BR 2.004-03 $\phi D=45$
 BR 2.004-02 $\phi D=40$
 BR 2.004-01 $\phi D=35$
 BR 2.004 $\phi D=30$

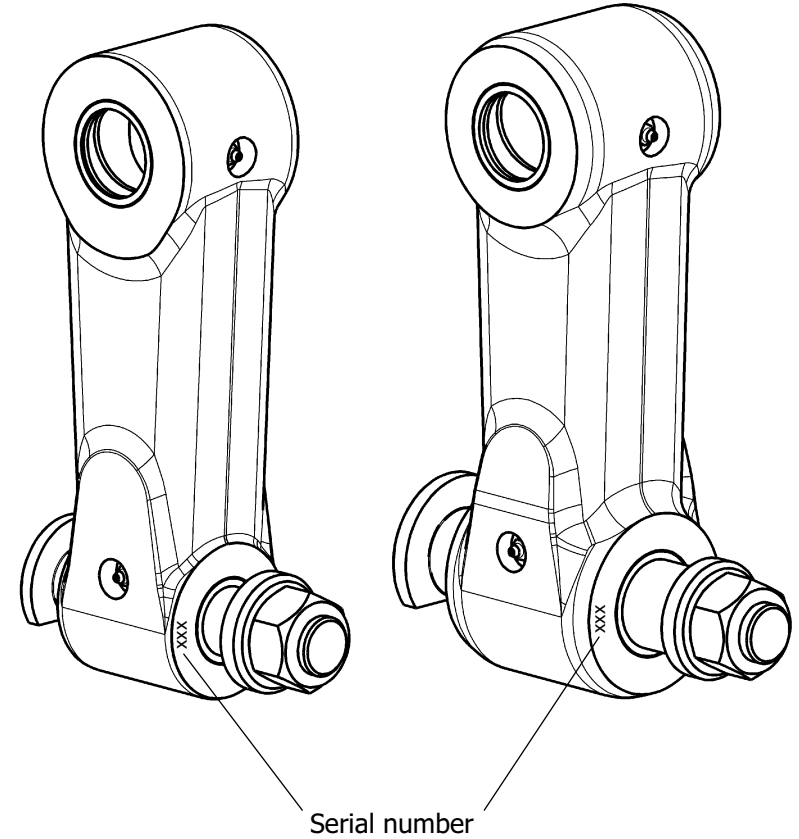
Part no
 BR 3.004-02 $\phi D=45$
 BR 3.004-01 $\phi D=40$
 BR 3.004 $\phi D=35$

2004.08.12

Linkset 80 steel, Linkset S steel

Gelenk 80 Stahl, Gelenk S Stahl

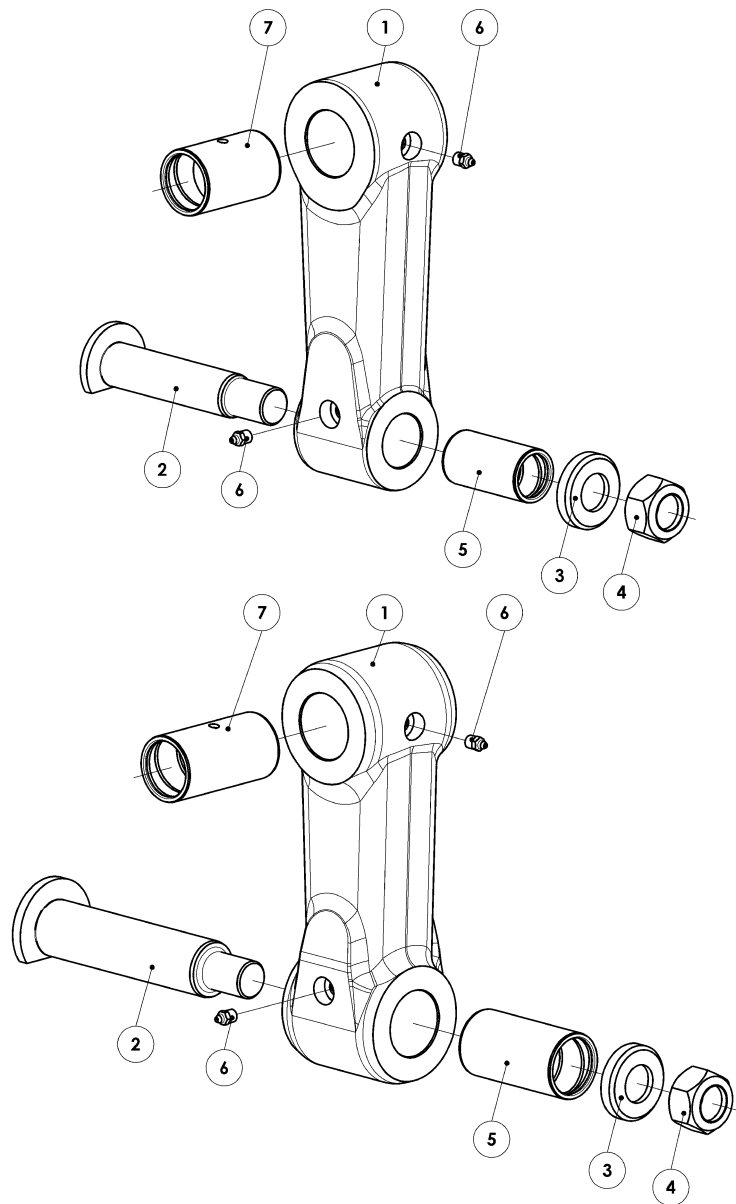
BR 2, BR 3



2004.08.12

Linkset 80 steel, Linkset S steel

Gelenk 80 Stahl, Gelenk S Stahl



2004.08.12

Linkset 80 steel, Linkset S steel

Gelenk 80 Stahl, Gelenk S Stahl

Fig Nr.	Part no Pos. Nr.	Qty Stück	Description	Beschreibung	Kit Komplet	Notes Notizen
A	BR 2/45		Linkset with upper bushing Ø 45	Gelenk mit Buchse Ø 45	1 - 6 7A	
B	BR 2/40		Linkset with upper bushing Ø 40	Gelenk mit Buchse Ø 40	1 - 6 7B	
C	BR 2/35		Linkset with upper bushing Ø 35	Gelenk mit Buchse Ø 35	1 - 6 7C	
D	BR 2/30		Linkset with upper bushing Ø 30	Gelenk mit Buchse Ø 30	1 - 6 7D	
1	BR 2.001-01	1	Link	Gelenk		
2	BR 2.002	1	Pin	Bolzen		Ø 35
3	BR 2.003	1	Washer	Scheibe		
4	M30x1.5	1	Nut	Mutter		DIN 985
5	BR 2.004-04	1	Steel bushing Ø35	Stahl Buchse Ø35		
6	1.2.C6	2	Grease nipple	Schmiernippel		
7 A	BR 2.004-03	1	Steel bushing Ø45	Stahl Buchse Ø45		
7 B	BR 2.004-02	1	Steel bushing Ø40	Stahl Buchse Ø40		
7 C	BR 2.004-01	1	Steel bushing Ø35	Stahl Buchse Ø35		
7 D	BR 2.004	1	Steel bushing Ø30	Stahl Buchse Ø30		
A	BR 3/45		Linkset with upper bushing Ø 45	Gelenk mit Buchse Ø 45	1 - 6 7A	
B	BR 3/40		Linkset with upper bushing Ø 40	Gelenk mit Buchse Ø 40	1 - 6 7B	
C	BR 3/35		Linkset with upper bushing Ø 35	Gelenk mit Buchse Ø 35	1 - 6 7C	
1	BR 3.001-01	1	Link	Gelenk		
2	BR 3.002	1	Pin	Bolzen		Ø 45
3	BR 2.003	1	Washer	Scheibe		
4	M30x1.5	1	Nut	Mutter		DIN 985
5	BR 3.004-02	1	Steel bushing Ø45	Stahl Buchse Ø45		
6	1.2.C6	2	Grease nipple	Schmiernippel		
7 A	BR 3.004-02	1	Steel bushing Ø45	Stahl Buchse Ø45		
7 B	BR 3.004-01	1	Steel bushing Ø40	Stahl Buchse Ø40		
7 C	BR 3.004	1	Steel bushing Ø35	Stahl Buchse Ø35		

2004.08.12